

## A RECORD OF SUCCESS:

A. Louis Supply  
Ashtabula County District Library  
Ashtabula Towne Square  
Ashtabula YMCA  
Bob Evans Restaurant  
Brobst Landscaping  
Country Club Retirement Campus  
Deb's Klassy K-9  
Deck Vending  
Denny's Restaurant  
Flying J Truck Stop  
Geneva Point  
Grand River Academy  
Guyreino's Deli  
Happy Hearts School  
Jefferson Rehabilitation Center  
Kingsville Truck Stop  
Little Caesar Pizza  
McDonalds of Geneva  
Orlando Brothers Golden Dawn  
Perkins Restaurant  
Praxair Inc.  
Premier Fitness  
Premix Inc.  
Sanctuary of Geneva  
Subway  
Taco Bell  
Thomas Fence  
Thomas J Raffa D.D.S. Inc.  
U H Conneaut Hospital  
Walgreens Drug Store  
Wal-Mart

## Contact Us

Ash/Craft Industries, Inc.  
5959 Green Road  
Ashtabula, Ohio 44004  
(440) 224-2177



## Our Mission...

*Ash/Craft Industries is committed to the provision of programs, services and supports to assist individuals with developmental disabilities in the enhancement of vocational and social skills that will enable them to live, work and participate in their community as independently as possible.*



We are Accredited by the Ohio Department of Developmental Disabilities and the national Commission on Accreditation of Rehabilitation Facilities.

*The Ashtabula County Board of  
Developmental Disabilities  
An Equal Opportunity Employer*



Ash/Craft Industries, Inc.

*Creating  
Opportunities  
For Business...  
For People*



**COMMUNITY  
EMPLOYMENT  
SERVICES**

# Providing outcome-driven programs and services to enhance the lives of individuals with developmental disabilities

## Community Employment

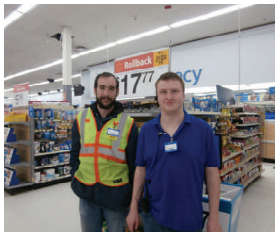
Let our Community Employment Department help you fill positions with energetic and motivated workers. The services provided by Ash/Craft's Community Employment Department are **free to the employer**.

### WHAT'S IN IT FOR YOU

**DEPENDABLE EMPLOYEES:** We have dependable and motivated candidates.

**TRAINING:** A job coach that assists with job training at no cost to you.

**EMPLOYER TAX CREDIT:** This federal tax credit provides Ohio employers with a tax credit for hiring individuals with a disability.



Some of the services we provide are:

**JOB MATCHING:** We screen the potential candidates making sure their abilities are a good match for the job.

**JOB COACHING:** Our job coach helps train an individual at work to be sure he or she learns job duties correctly and completely.

**FOLLOW ALONG SERVICE:** We provide follow-along services to help your new employee with the adjustments that come with any new job. We maintain regular contact with the employer throughout the individuals employment and are never more than a phone call away.



### FROM OUR CUSTOMERS:

“Ash/Craft helped us find an employee who could get the job done. I would recommend Ash/Craft's employment services to other employers in our community.”

**Charlie Deck, Deck Vending Services**

“We are very pleased with our employee who came to us from Ashcraft Industries. He is highly motivated, dependable and always willing to help his coworkers. He is a perfect fit within our organization, and is now a part of our family.”

**Wendy Bertolotti, UH Conneaut Hospital**

“Michael is a true example of what we look for in an employee. He works well with everyone around him, produces quality work, and is a dedicated employee (as evidence by his 11 year tenure). Michael makes Bob Evans a better restaurant and Ash/Craft has provided all the tools to make him a successful employee in the workforce.”

**Justine Pesicek, General Manager Bob Evans**

